

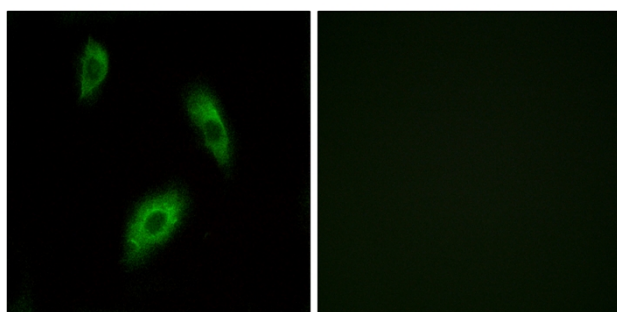


# GPR174 Polyclonal Antibody

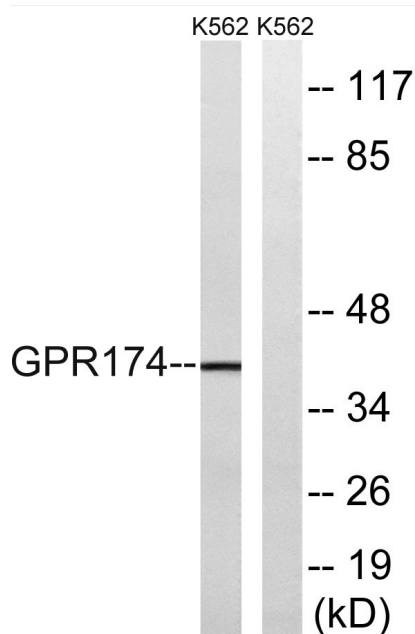
<b>Catalog No</b>	YP-Ab-13320
<b>Isotype</b>	IgG
<b>Reactivity</b>	Human;Rat;Mouse;
<b>Applications</b>	WB;IF;ELISA
<b>Gene Name</b>	GPR174
<b>Protein Name</b>	Probable G-protein coupled receptor 174
<b>Immunogen</b>	The antiserum was produced against synthesized peptide derived from human GPR174. AA range:131-180
<b>Specificity</b>	GPR174 Polyclonal Antibody detects endogenous levels of GPR174 protein.
<b>Formulation</b>	Liquid in PBS containing 50% glycerol, 0.5% BSA and 0.02% sodium azide.
<b>Source</b>	Polyclonal, Rabbit,IgG
<b>Purification</b>	The antibody was affinity-purified from rabbit antiserum by affinity-chromatography using epitope-specific immunogen.
<b>Dilution</b>	Western Blot: 1/500 - 1/2000. Immunofluorescence: 1/200 - 1/1000. ELISA: 1/40000. Not yet tested in other applications.
<b>Concentration</b>	1 mg/ml
<b>Purity</b>	≥90%
<b>Storage Stability</b>	-20°C/1 year
<b>Synonyms</b>	GPR174; FKSG79; Probable G-protein coupled receptor 174
<b>Observed Band</b>	39kD
<b>Cell Pathway</b>	Cell membrane; Multi-pass membrane protein.
<b>Tissue Specificity</b>	Brain,
<b>Function</b>	function:Putative receptor for purines coupled to G-proteins.,similarity:Belongs to the G-protein coupled receptor 1 family.,
<b>Background</b>	This gene encodes a protein belonging to the G protein-coupled receptor superfamily. These proteins are characterized by the presence of seven alpha-helical transmembrane domains, and they activate or interact with various endogenous or exogenous ligands, including neurotransmitters, hormones, and odorant and taste substances. This family member is classified as an orphan receptor because the cognate ligand has not been identified. [provided by RefSeq, Sep 2011],
<b>matters needing attention</b>	Avoid repeated freezing and thawing!

**Usage suggestions**

This product can be used in immunological reaction related experiments. For more information, please consult technical personnel.

**Products Images**

Immunofluorescence analysis of LOVO cells, using GPR174 Antibody. The picture on the right is blocked with the synthesized peptide.



Western blot analysis of lysates from K562 cells, using GPR174 Antibody. The lane on the right is blocked with the synthesized peptide.